



## Human Body Temperature Measurement Face Recognition Access Control System



## Product Description

Adopting the high-performance hardware platform of RSM micro rk3288 / rk3399 / Qualcomm msm8953, equipped with industrial grade binocular camera and human face recognition technology, as well as infrared thermal imaging module. It supports mask recognition, ID card reader, fingerprint instrument and other peripheral extensions. It can be applied to gate channel and access control attendance to achieve safe and efficient access control of personnel.

Recognition System can reduce face-to-face contact between people, reduce attendance of manual inspections, protect against high fever groups, and ensure people's safety.

## product comparison

### Thermometers



Suitable for home use only

### Outdoor thermometer



Distance between people <1 M

## Product Advantages

### Recognition System

Facial recognition

High temperature alarm

Face mask reminder



### • Support 1:1 And 1:N Identification

1:1 Brush documents to collect real-time portraits, compare the identity

of the documents to judge the consistency of the person's certificate, the accuracy rate is over 99.7%.

A1:N Collect face information to build a face database, and quickly identify the face database with a hit rate of 96.7%.

### •Non-contact temperature measurement safer

Built-in infrared non-touch temperature measurement module. When people is performing face recognition, it can measure their forehead and facial skin temperature at the same time. In a non-contact, accurate, reliable, efficient, and non-perceived way, the terminal will issue an unusual warning to those whose body temperature exceeds normal values, and show their temperature.

### •Distance 30-80cm

Body temperature measurement

Temperature measurement values can be set in backstage. When personnel temperature are detected higher than the set value, alarm will be triggered, meanwhile the gate would not open. When personnel are identified to wear no masks, alarm will be triggered as well, and gate would not open.

Support voice broadcast during measuring

### •Binocular camera supports live detection

Unique face recognition algorithm to accurately recognize faces, face recognition time <1 second

## Product Performance

### •2Mega Pixel Camera

Super large aperture, wide dynamic image sensor, clear collection of every detail.

Blindness Algorithm

World-class face recognition algorithm-Blindness algorithmDynamic tracking detection based on video stream, with android quad-core system Millisecond-level accurate recognition the system runs more smoothly

## •Large-capacity face database

Support 30000 face comparison library and 1000000 face recognition records

## •Automatic Fill light

Industrial class wide dynamic binocular camera, with infrared and led dual compensation at night are adopted

## •IP65 rated dust and water resistant

IP65 waterproof and dustproof, normal operation at -10~60℃, anti-glare, support outdoor open environment

## •Support binocular live detection

Supports fog through, 3D noise reduction strong light suppression, electronic image stabilization, and has multiple white balance modes, suitable for various applications.

## Composition diagram



Recognition system ( Standing Type )



Recognition system ( Wall mount type )

8-inch IPS full view LCD display.

Industrial appearance, waterproof and dustproof design, stable and reliable.

Support 3W face database. Extremely high face recognition rate, The speed of face recognition is less than 1 second.

Supporting the accurate face recognition and comparison when people wear masks.

The industrial class wide dynamic binocular camera, infrared and led dual compensation at night are adopted.

Strong performance. Four core rk3288 processor, six core rk3399 processor and eight core Qualcomm msm8953 processor are available for option.

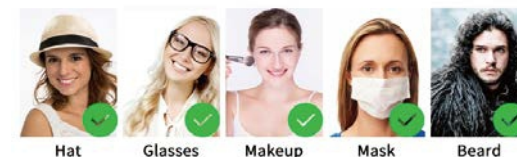
## Not supported identification

Photo / video / Wax figure / Camouflage / Twins



## Supported

Hat / glasses / makeup / mask / Moustache / Product Features



## Application scenario

Visitor Management / Kindergartens / attendants / Hotels / Wineshop /  
Schools / Subway stations / Office buildings / Supermarkets / Airports /  
Exhibitions / Companies / Factories



## Product Features

### •Uniqueness

Faces are unique, cannot be copied, and prevents counterfeiting

### •Non-contact

No need to touch the equipment, it can be identified by entering the range, convenient for hygiene

### •Driver application

Public cloud deployment, private deployment, LAN use, stand-alone use

### •Various expansions

Supporting expansion of various peripheral devices such as ID card reader, fingerprint instrument, IC card reader, QR code reader, etc

### •Stability

Different angles/ different light/face changes can be accurately identified

### •High accuracy

Adopting high performance Infrared thermal imaging module,  
temperature measuring accuracy  $\pm 0.5^{\circ}\text{C}$

### •Development

Supports multiple API docking for secondary development.

### •Easy data collection

No special equipment needed. Mobile phones and computer cameras can capture faces anytime anywhere.



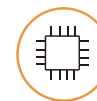
Easy installation



Shell waterproof



Face recognition



Powerful processors



Fingerprint swipe



HD camera



Automatic fill light



$\pm 0.5^{\circ}\text{C}$  accuracy



Unusual body temperature alarm



Wear mask recognition



Large-capacity face database



Infrared temperature measurement



## Technical Data

Model No.		AX-20D
Camera	Pixels	200W
	Type	Binocular wide dynamic camera
	Focus distance	50-150cm
	White balance	Auto
Display	Size	8.0 inch
	Resolution	800×1280
Processor	CPU	Rk3288 four cores/ rk3399 six cores/ msm8953 eight cores
	Local storage	EMMC 8G
Accessory	Fill light	LED and infrared double fill light
Interface	Network module	Support Ethernet, wireless (WiFi)
	Audio	Support 2.5W/4R horn
	USB	1*USB OTG, 1*USB HOST Standard A port
	Serial	1*RS232
	Relay output	1
	Wiegand interface	1*26/34 output, 1*26/34 input
	Upgrade button	Uboot upgrade button
	LAN	1*RJ45
Function	Face detection	Supports multiple people detection and tracking
	Face database capacity	30 thousand
	1:N Face recognition	Supported
	1:1 face-matching	Supported
	Stranger detection	Supported
	Detection distance configuration	Supported
	UI interface configuration	Supported
	Remote upgrade	Supported
	Device interface	Interface includes equipment management, personnel / photo management, record query, etc
	Deployment mode	Support public cloud deployment, private deployment, LAN use, stand-alone use
Infrared thermal imaging module	Human body temperature detection	Supported
	Temperature detection distance	1 meter
	Measuring Accuracy	≤ ±0.2℃
	Measuring range	10℃~42℃
	Thermal imaging field of view	32 X 32℃
	Visitors with normal temperature will be passed directly	Supported
	Over temperature alarm	Supported (temperature alarm value can be set)

# Anxia

Building D, Anxia Science Park,  
No. 4, Waihuan Road,  
Shilongzai Community, Shiyan  
Street, Bao'an District,  
Shenzhen

Tel: +86 188 9858 9685

Email: sammy@anxiagroup.com

www.anxiagroup.com