



Pedestrian/Cyclist Shared Outdoor Turnstile Gate IPW-PM1000

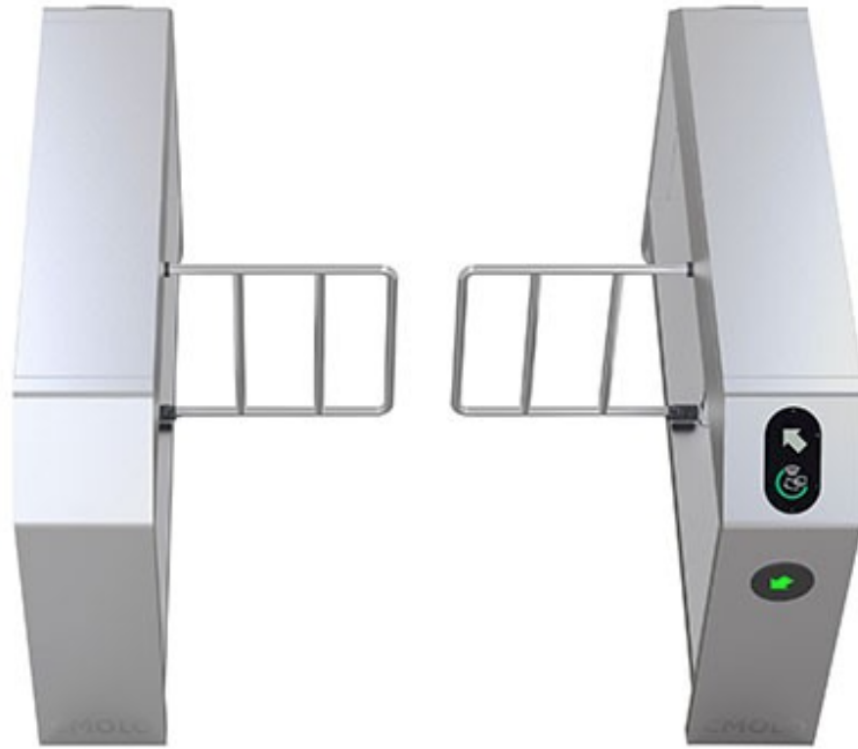
IPW-PM1000 is the outdoor turnstile gate for pedestrian and cyclist. Designed for outdoor usage specially, it can withstand various outdoor harsh environments such as sunlight & rain, sandstorm & rain-snow, large temperature difference between day and night.

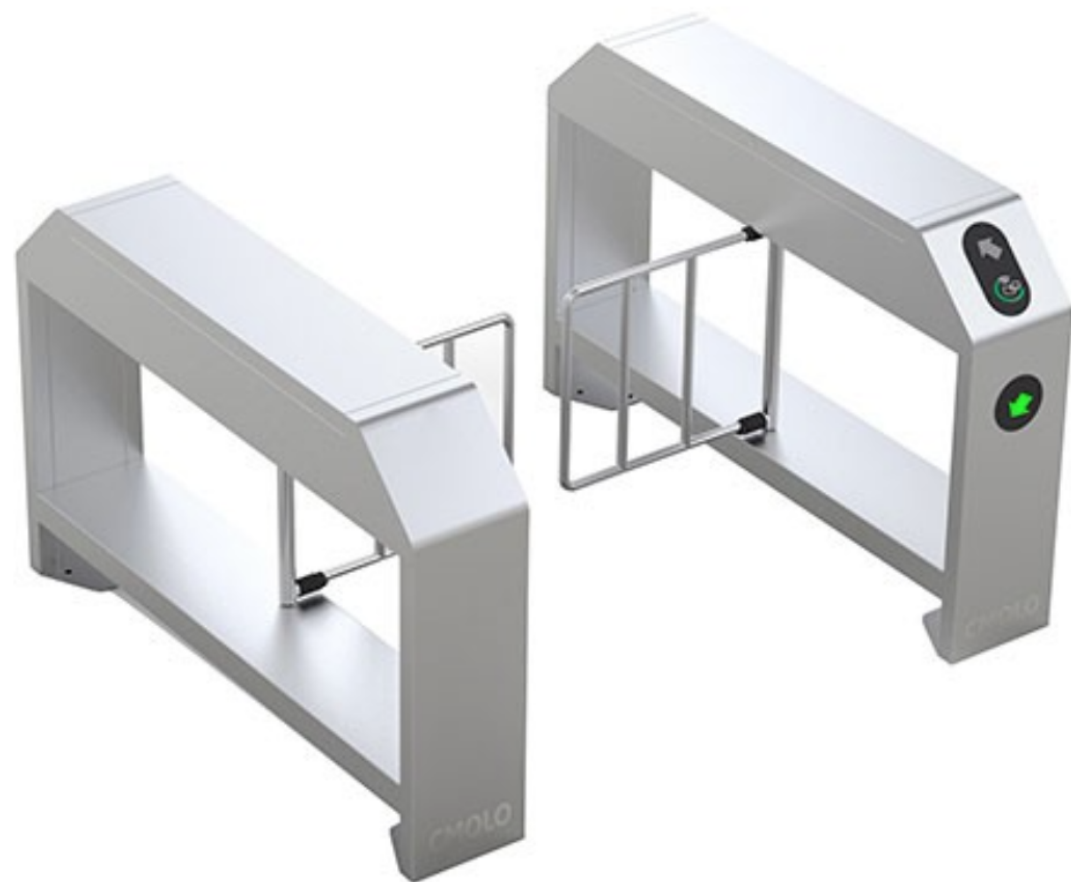
The outdoor turnstile gate is suitable for mineral mining bases, factories, tourist attractions, residential communities and other outdoor applications.



ACCEDER







ACCEDER



Unique Advantages of Outdoor Turnstile Gate

Protection level is IP65: outdoor turnstile gate is with the functions of strong water-proof and dust-proof.

Shared use of pedestrian & cyclist: pedestrian, bicycle and motorcycle are allowed to pass through the same passageway.

Sustain violent hitting on gates: the elastic swing gates created by CMOLO can sustain frequent violent hitting. Within limited range of impact force, swing gates can withstand 200KGF external hitting.

Resistant to sunlight interference: the infrared sensor structure is adopting matrix distribution and anti direct sunlight design, which can reduce the interference from sunlight to avoid false alarming.

Resistant to high & low temperature: outdoor turnstile gate can work normally when under ultra-high or ultra-low temperature.

Advanced and Powerful Mechanism Structure

Outdoor turnstile mechanism can sustain over 5 times impact force than normal speed gate mechanism.

The internal structure of mechanism is also original, which can make swing gates locked completely to prevent illegal intrusion when swing gates are at home position.

The mechanism structure is designed to be very compact and with large load capacity, which can load swing gates weighing 10KG. (The lane width can be 1m~2m.)



All-around Personal Safety Protection

Adopt original advanced mechanical structure. When the power is off, turnstile system will unlock swing gates automatically. The swing gates can be manually pushed into an open state so as to evacuate people in the event of an emergency.

With multiple anti-clamping designs, such as anti-clamping, mechanical anti-clamping and anti-collision by advanced electric current detection, it can protect personal safety of passengers.

All electric modules are designed to operate under the safety voltage of 24V, and configured with residual current protective device to effectively avoid electric shocks.

Intelligent & Advanced Turnstile Core Technology

Using CMOLO[®] Patent passing detection kernel algorithm and matrix type photoelectric stereoscopic detection technology , it can sensitively detect the behaviors that threaten the passageway safety, such as reverse passing, tail-gating, illegal intrusion and give out audible and visual alarms. Outdoor turnstile can be also linked with other security systems.

Strong & Stable Turnstile Control Core

CMOLO independent research and development of lossless mechanism structure, high-quality imported DC brushless motor (mechanism core) and electromagnet imported from Germany are configured to ensure longer lifespan. **Turnstile's mechanism & control system has passed 10 million lifetime test.**

Carrying advanced servo control system and DSP+ARM motor control technology and combining CMOLO original motor control algorithm, it can truly complete precise control & positioning. Outdoor turnstile is with stable performance.



Features

Customization

Dimension, Material & Surface Treatment

Appearance: Proper modifications can be made according to customer's requirements.

Stainless steel thickness of the cabinet: customizable within the range of 1.5~3.0mm.

Lane width: 2m is at the maximum, but the lane depth may be changed accordingly.

Material of the cabinet: 304 / 316 grade stainless steel.

Surface treatment of the cabinet: satin finish / polishing / frosted finish / electroplating / baking finish.

System Integration

Integrate with access control system required by customers, and built-in reader appointed by customers.

Integrate with visitor management system.

Integrate with ticketing system.

Integrate with fingerprint identification, ID card recognition, passport identification system, etc.



Direction Indicator

The installation position of direction indicator can be adjusted.

The pattern of direction indicator can be customized.

Functions

Built-in or external counter

TCP / IP communication function

Audible and visual alarm function

Thermostat system

Under a low temperature environment, thermostat system can be installed inside the turnstile.