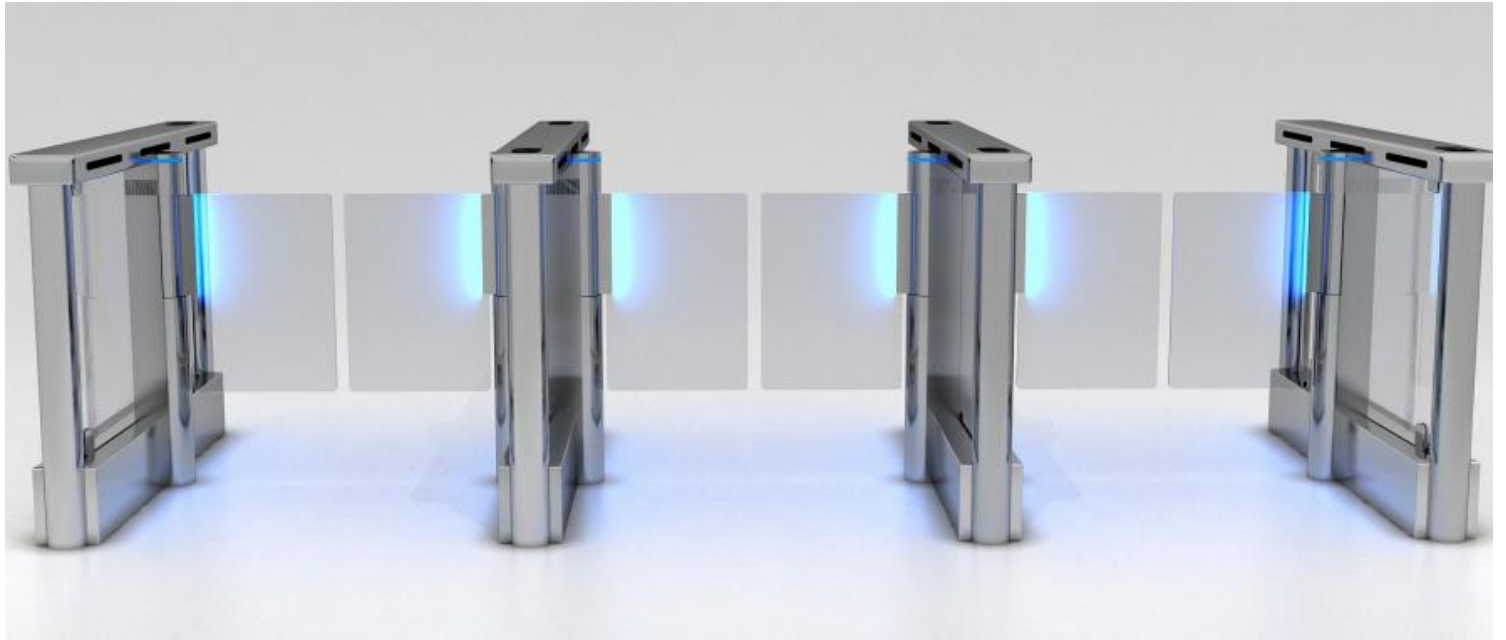
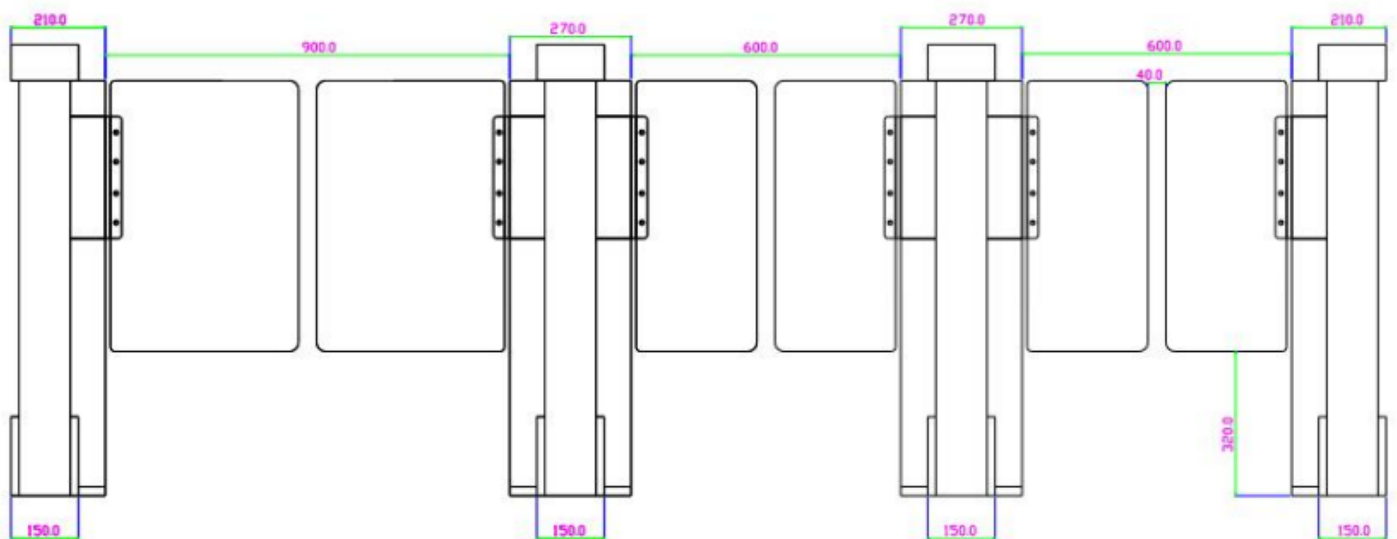
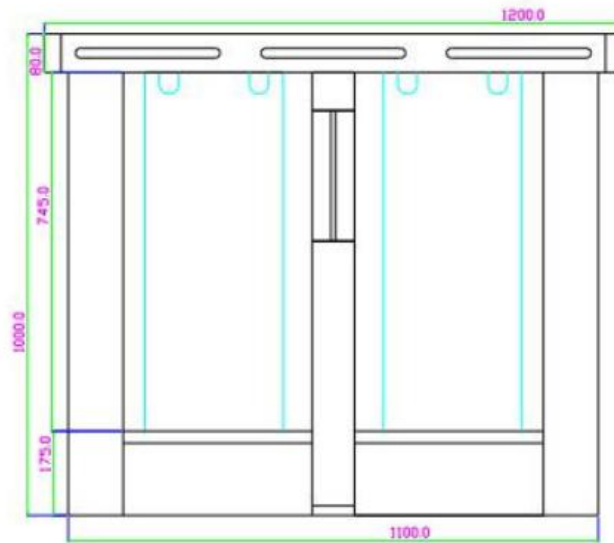


TOR-O-ACC24



Dimensiones del Producto





Parámetros

Housing material	304 stainless steel
Surface treatment	Brushed finish
Swing gate material	Organic glass
Normal throughput capacity	30 ~ 45 people / min (according to the condition of pedestrians)
Evacuation throughput capacity	60 people/min (according to the condition of pedestrians)
Opening speed of swing gate	0.3-0.6s
The turning angle of swing gate	±90°
Operation temperature	-20℃~60℃
Power supply	AC90-264V, 50/60HZ
Rated power	180W
input/output Signal	Dry contact signal input
Communication interface	RS485 / RS232; TCP/IP interface (customizable)
Driving motor	DC brushless motor
Positioning method	Use brushless motor and hall sensor to position the swing gate accurately
Method of motor control	Use high-performance STC chip